

On the Spectrum LIVE ON STAGE!!



Hosted by Dougal Austin & Jeremy Samson



"A live 90min panel discussion about Autism/Aspergers. Including 3-4 industry experts discussing their roles & services amongst the ASD community. Audience members will be given chances to ask their questions. Come along for this exciting show & help us raise further awareness about ASD"

Kilmore Trackside

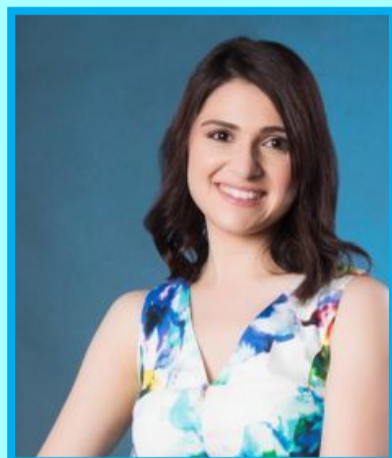
East St, Kilmore, VIC

Wednesday 15th May

7.30pm – 9.00pm

FREE ENTRY

Doors Open 6.30pm



Connie Buckingham
(Social Learning Studio)



Rebecca Perkins
(My Special Child)



Melissa Bryan
(Crisalida Family Therapy)